



Case Study

Australian Mining Leader Standardises Intelpower DC Systems Across WA Projects

Project Snapshot

Client: National EPC partners supporting one of Australia's largest mining organisations

Location: Western Australia, multiple remote sites

Scope: Design and delivery of 110V DC power systems and VRLA battery banks

Timeline: Delivered and commissioned across three projects

Objective: Ensure reliable DC power for critical control and protection systems under demanding operating conditions

Century Yuasa Power Systems Division has built strong partnerships with two Western Australian EPC organisations through close engineering collaboration. As a result, Intelpower DC power systems and Yuasa VRLA battery technology have been specified across multiple mining projects, reflecting a high level of trust in performance and reliability in remote environments.

Solutions Delivered

A standardised DC power system solution was developed collaboratively between Century Yuasa, EPC partners and the asset owner.

The solution included:

- Custom-designed Intelpower 110V DC power systems
- Integration of Yuasa UXL VRLA battery technology for long-duration standby performance
- Optimised system footprint to suit constrained installation environments
- Design and engineering aligned with Australian and international compliance standards
- Systems configured for reliable operation in remote and high-temperature conditions



Case Study



Trusted Power. Unmatched Reliability.

Case Study

Australian Mining Leader Standardises Intelepower DC Systems Across WA Projects

Project Detail

Projects delivered by both EPC partners presented a range of engineering challenges, including constrained installation footprints, elevated ambient temperatures and strict compliance requirements.

As DC power systems are a specialised discipline, Century Yuasa provided technical leadership across system design, footprint optimisation and compliance alignment. This supported EPC engineering teams and ensured that system performance met the operational requirements of the asset owner.

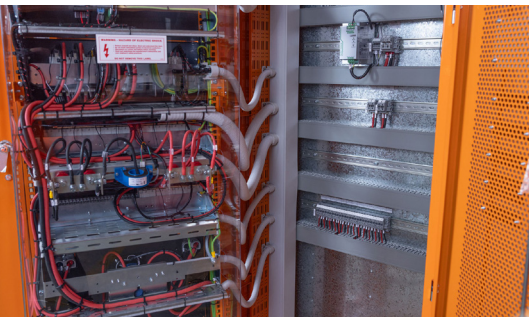
Following successful project delivery, Century Yuasa was engaged directly by the mining organisation to support the development of a standardised 110V DC power system specification for future sites. With installations located in remote regions, often more than 1,500 kilometres from Perth, system reliability, serviceability and compliance were critical design considerations.

Outcomes & Benefits

- **Standardised System Design:** A consistent DC power system specification was developed to support repeatable deployment across multiple projects, aligned with safety requirements and Australian Standards.
- **Improved Project Confidence:** Successful delivery strengthened trust with EPC partners and enabled earlier technical engagement on future projects.
- **Compliance Assurance:** All systems were designed to meet strict Australian and international standards, as well as the asset owner's specific requirements.
- **Reduced Risk in Remote Locations:** Reliable system performance supports assets operating in remote environments where maintenance access is limited.
- **Local Engineering and Manufacturing:** Systems were supported by Australian-based engineering, manufacturing and service teams, reinforcing local capability and responsiveness.

The successful delivery and standardisation of Intelepower DC power systems across multiple Western Australian mining projects demonstrates the value of technical expertise, collaborative engineering and proven system performance.

By aligning system design with the operational requirements of remote infrastructure, Century Yuasa continues to support reliable, compliant and long-term DC power solutions for critical applications.



To learn more, visit www.intelepower.com.au
or call **1300 364 877**



Trusted Power. Unmatched Reliability.