

Yuasa UXH Series VRLA Battery

Yuasa UXH batteries are constructed to yield even greater capacity than comparable batteries. The UXH uses AGM technology which ensures that there is no 'free acid' in the battery. This allows the battery to be mounted either vertically or horizontally.

- High Energy Density
- Gas Pressure Venting System
- No Equalising Charge Required
- Wide operating temperature range (-15°C to +45°C)

General Performance

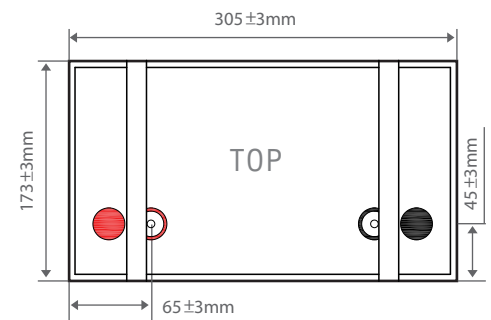
Battery	UXH90-12I	
Application	Floating	
Nominal Capacity	90Ah	
Actual Capacity at 25°C	1 hour rate to 1.70 Vpc	61.6Ah
	3 hour rate to 1.70 Vpc	73.8Ah
	10 hour rate to 1.80 Vpc	84.5Ah

Electrolyte

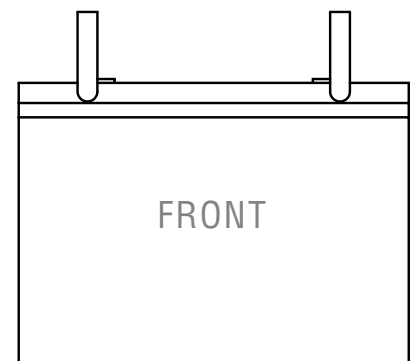
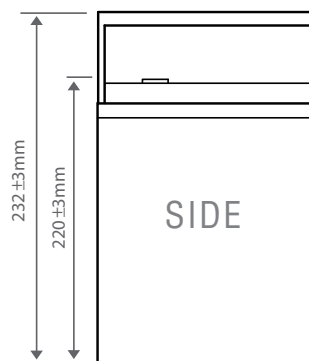
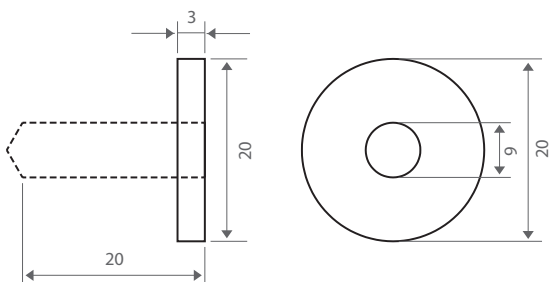
Fully charge density at 20°C	1.320
Density Range	1.300-1.330
Gelled/Absorbed	Absorbed
Mounting Orientation	Vertical/Horizontal

Plates

Positive Plates:	
Type	Flat Pasted
Material of grid	Lead-Calcium-Tin Alloy
Negative Plates:	
Type	Flat Pasted
Material of grid	Lead-Calcium-Tin Alloy



Terminal Type - M6



Yuasa UXH Series VRLA Battery

Physical Properties

Separators	
Type	Glass Mat
Is glass fibre included?	Yes
Thickness	1.6mm
Lid & Container Materials	
Lid Material, Colour	Acrylonitrile Butadiene Styrene ABS/Grey
Container Material, Colour	Acrylonitrile Butadiene Styrene ABS/Grey
Flame Retardant	Yes - UL94-VO
Safety Vent Operational Pressure	20kPa Integral Flame Arrester
Flame Arrestor Filter Fitted	Yes
Dimensions:	
Overall Width	305mm±3
Depth	173mm±3
Height	220mm±3
Overall Height	223mm±3
Battery Weight (kg) Total (wet)	31.2kg

Electrical Properties

Self Discharge Rate @ 25°C	<3% per month		
Internal Resistance (mOHMS)	4.5mΩ		
Normal Charge (Amperes)	9A		
Max. Charge (Amperes)	22.5A		
Max. Sustained Current without damage (discharging)	<540A (5sec)		
Volts End of Charge	2.275 Vpc		
	20°C	25°C	30°C
Float Voltage (Vpc) pure floating applications	2.290 Vpc	2.275 Vpc	2.260 Vpc
Float Current (mA)	<90mA	<90mA	<90mA
Initial Short circuit current (A)	3300A		
Efficiency at 10 hour rate (%):			
Ampere-Hour	>90%		
Watt-Hour	>78%		

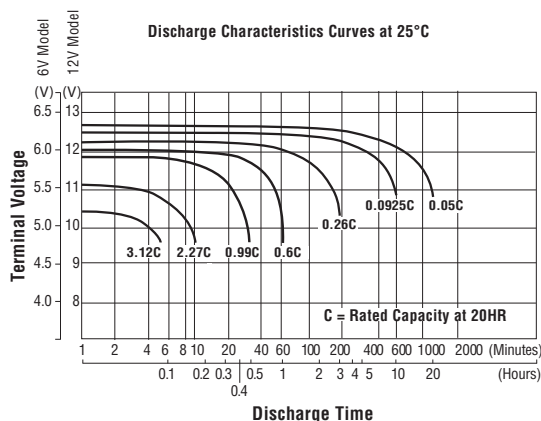
Torque Setting

Terminal Torque Setting	3.9-5.4 N.m.
-------------------------	--------------

Compliant Standard

Battery Standard	JIS C8704-2
------------------	-------------

Discharge Characteristics



Charging Characteristics

